

# Migrate To Hyper-V

Niklas Åkerlund Product Manager Cloud

Lumagate AB



Partner Awards 2013

ÅRETS  
CLOUD OS  
PARTNER

**NORDIC  
SYSTEM CENTER  
SUMMIT**

# vNiklas Åkerlund

- MCT/VCI/CNI
- MCSE: Private Cloud
- VMware vExpert 2012,2013
- Blog: <http://vNiklas.djungeln.se>
- Twitter: @vNiklas



# Key Focus Areas

 Who's Migrating & Why?

 Initial Assessments

 Migration with System Center 2012 SP1 / R2

 MAT / Netapp Shift

 Double Take Move with System Center

 Summary

# Switchers

- Who
  - Small Environments
  - Medium Environments
  - Large Environments
  - Service Providers
- Why
  - Cost in SnS etc..
  - Uniformity
  - Competence
- How
  - .....



# Key Focus Areas

 Who's Migrating & Why?

 Initial Assessments

 Migration with System Center 2012 SP1 / R2

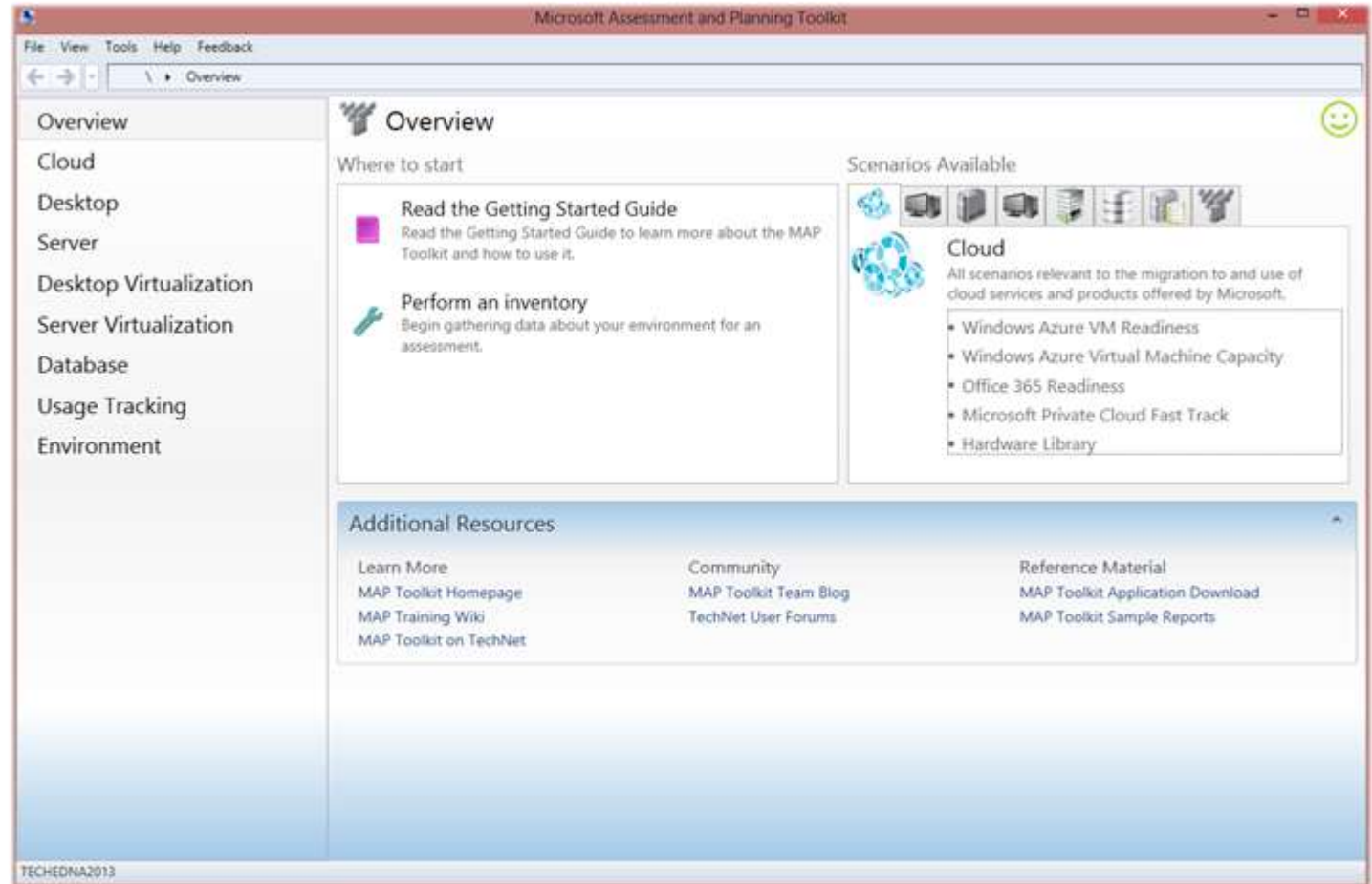
 MAT / Netapp Shift

 Double Take Move with System Center

 Summary

# Microsoft Assessment & Planning Toolkit

- Free download
- Agentless inventory, assessment, and reporting tool
- Securely assess IT environments for various platform migrations
- Version 9.0 Beta currently available.



# Demo

Microsoft Assessment and Planning

# Key Focus Areas

 Who's Migrating & Why?

 Initial Assessments

 Migration with System Center 2012 SP1 / R2

 MAT / Netapp Shift

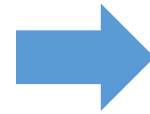
 Double Take Move with System Center

 Summary

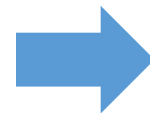


# Microsoft Options | VMM + Orchestrator

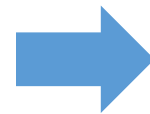
**V2V Inbox** – Walk through a simple wizard to convert VMs from VMware to Hyper-V. VMs should have VMware Tools removed, and can be on a host (off), or in VMM library.



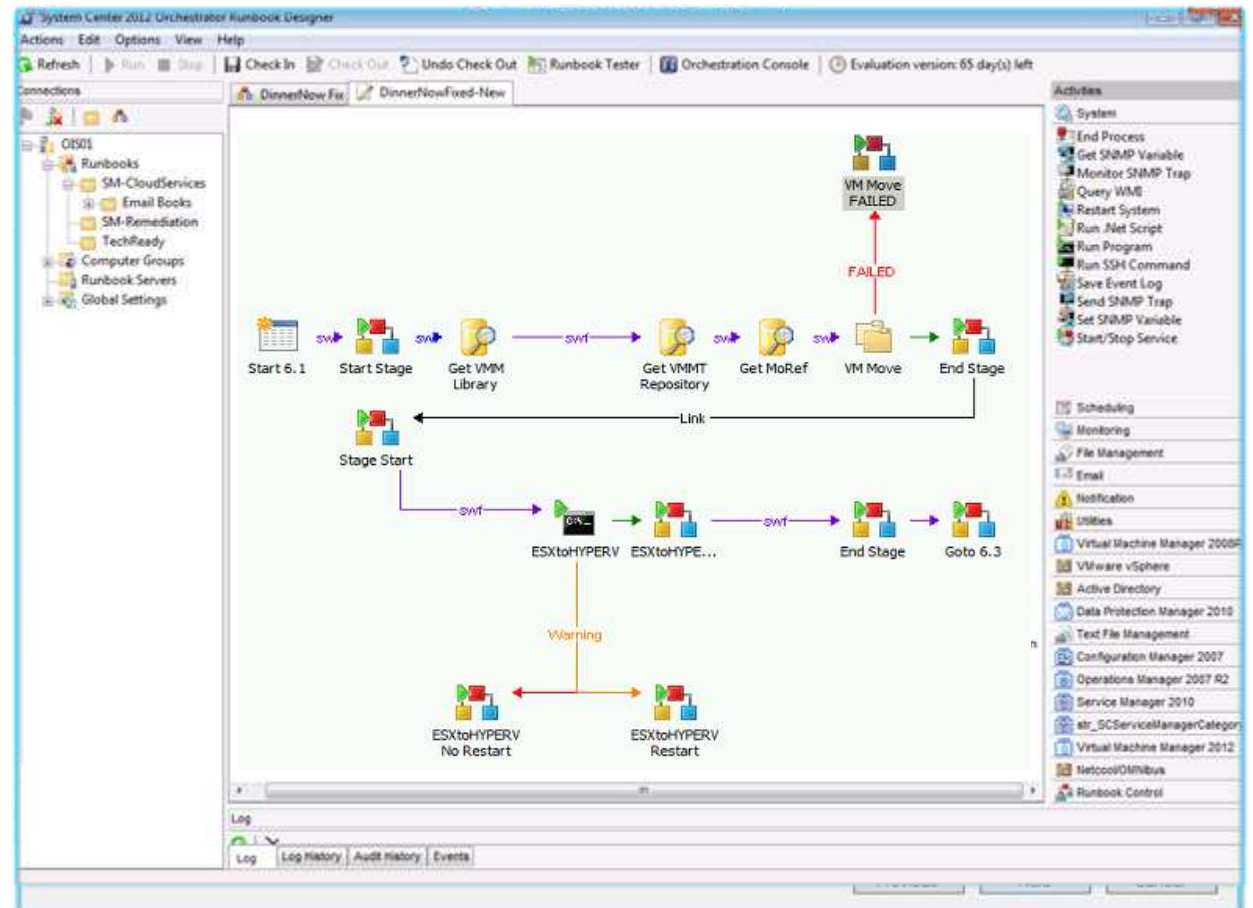
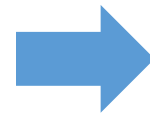
**Easy Steps** – Select VM settings, Select Host, Select Path, Select Networks



**Finish** – View Script button for PowerShell



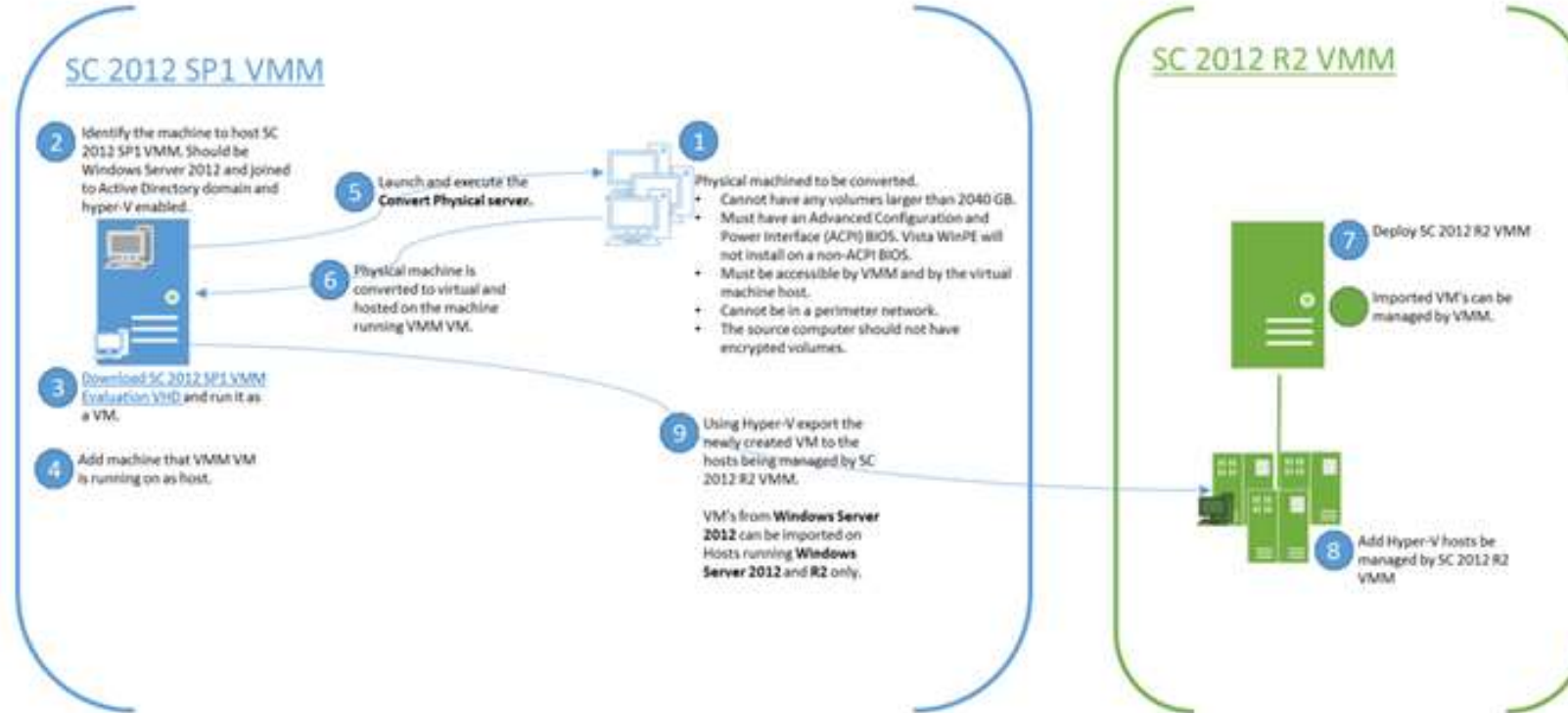
**Orchestrator** – Combine with Orchestrator to automate the conversion process from VMware to Hyper-V



# Demo

VMM V2V

# SC VMM 2012 (R2) P2V



# Key Focus Areas

 Who's Migrating & Why?

 Initial Assessments

 Migration with System Center 2012 SP1

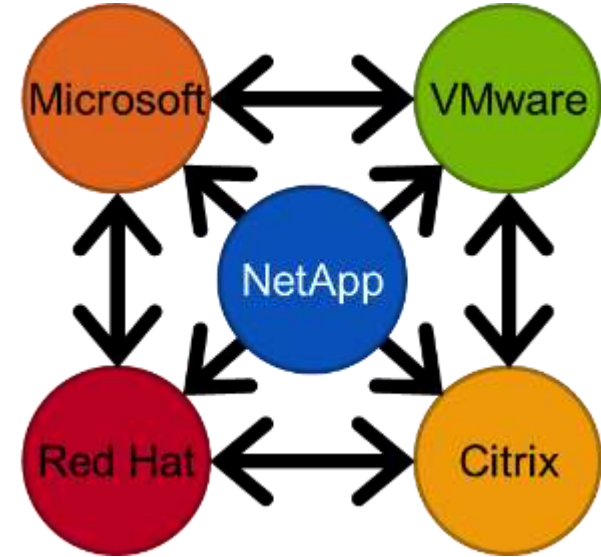
 MAT / Netapp Shift

 Double Take Move with System Center

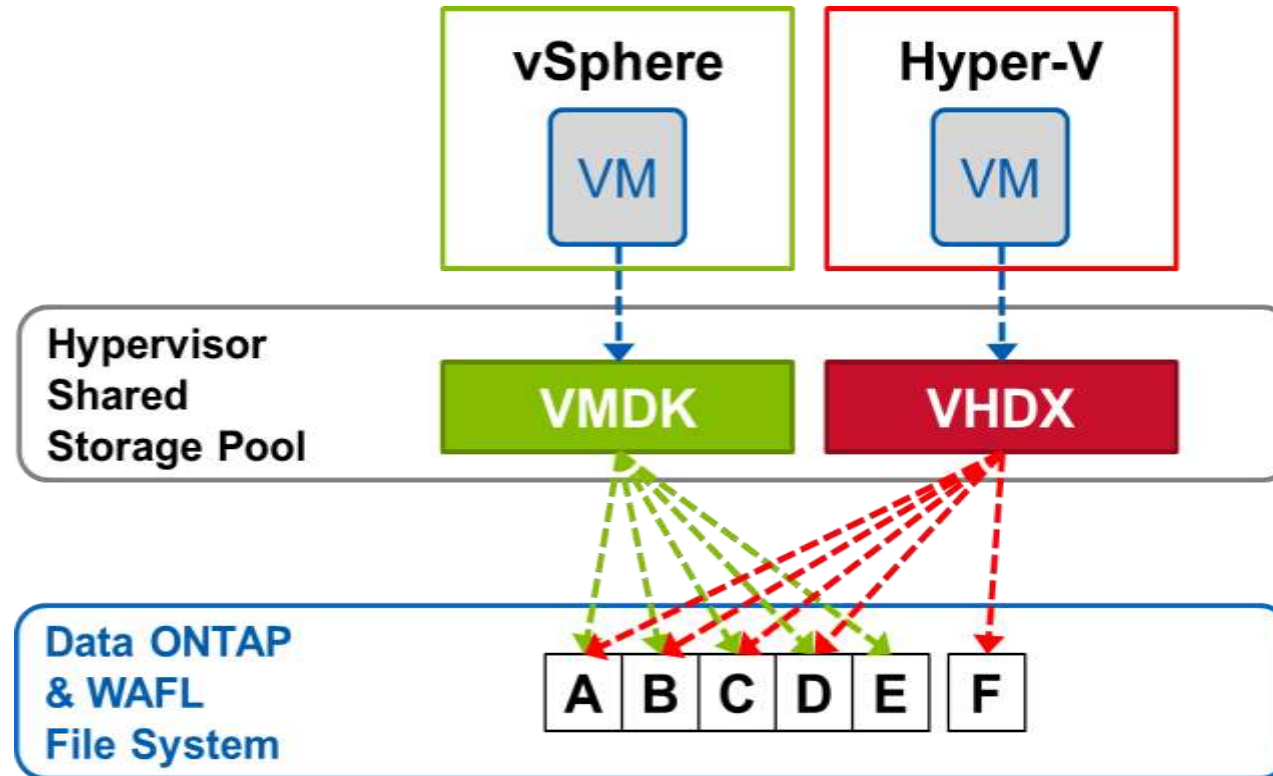
 Summary

# Netapp + MS = Fast

- NetApp ClusterOS Ontap
  - At least 8.2
  - NetApp PowerShell Toolkit
- How fast is fast?
  - 5 minutes per VM tops
- MAT – Migration automation Toolkit for Shift
  - Free
  - VMware tools removed
  - Networking migrated



# NetApp Shift



# Key Focus Areas

 Who's Migrating & Why?

 Initial Assessments

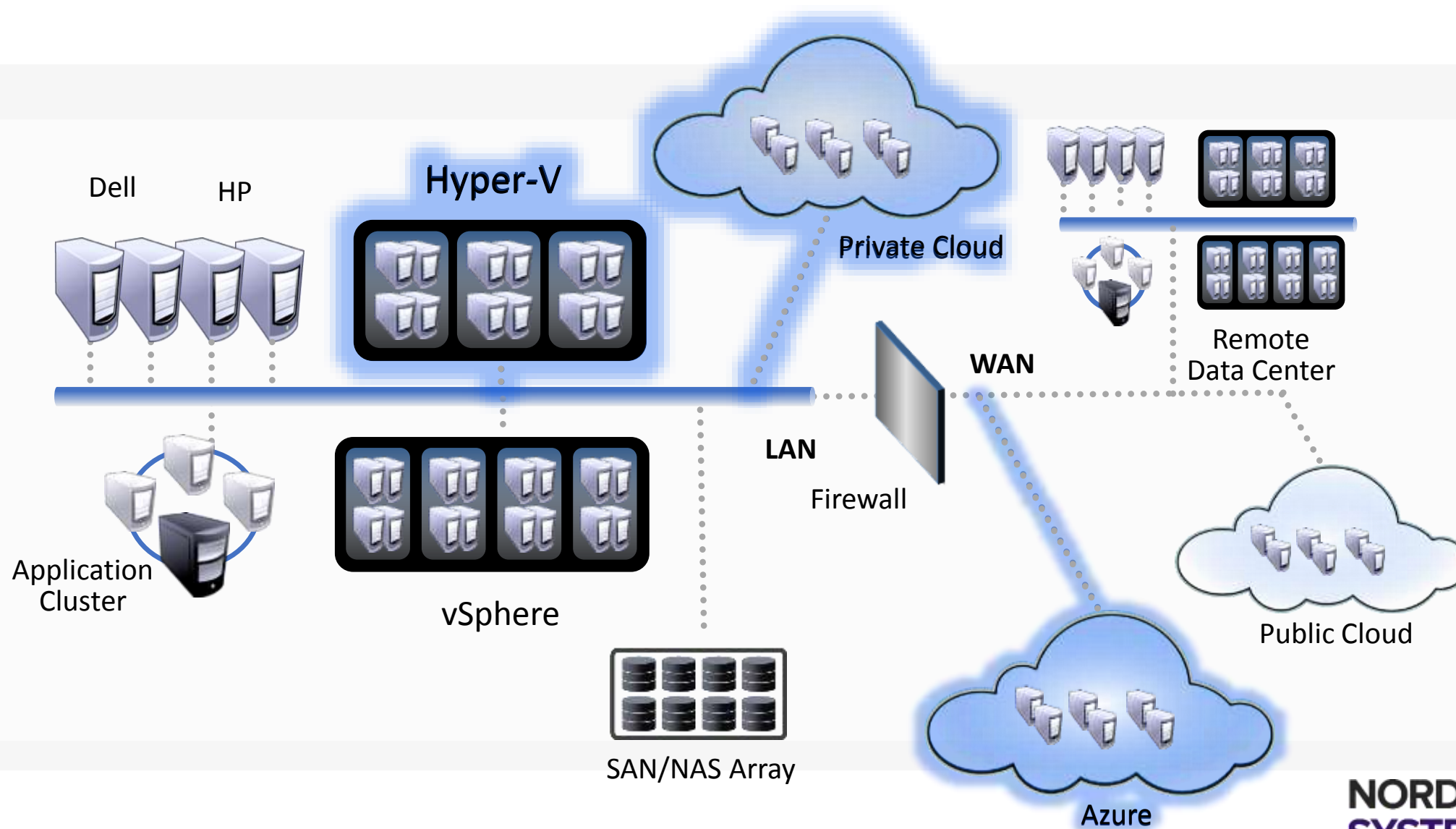
 Migration with System Center 2012 SP1 / R2

 MAT / Netapp Shift

 Double Take Move with System Center

 Summary

# Today's Data Center





# How did we get here?

## Changing Needs

Business critical applications  
IT agility

## Evolving Technology

Virtualization  
Private/Public Cloud

## Acquisitions

Disparate platforms, hypervisors, etc...  
Consolidation

## Performance Advances

Faster processors/storage  
Faster networks

# Some key challenges

## Migration

Update  
New  
Data validation

## Optimization

Load balancing  
Cloud bursting  
Performance requirements

## Availability

Local Availability  
Disaster Recovery  
Operational

**Workload  
Mobility**

# Mobility Scenarios

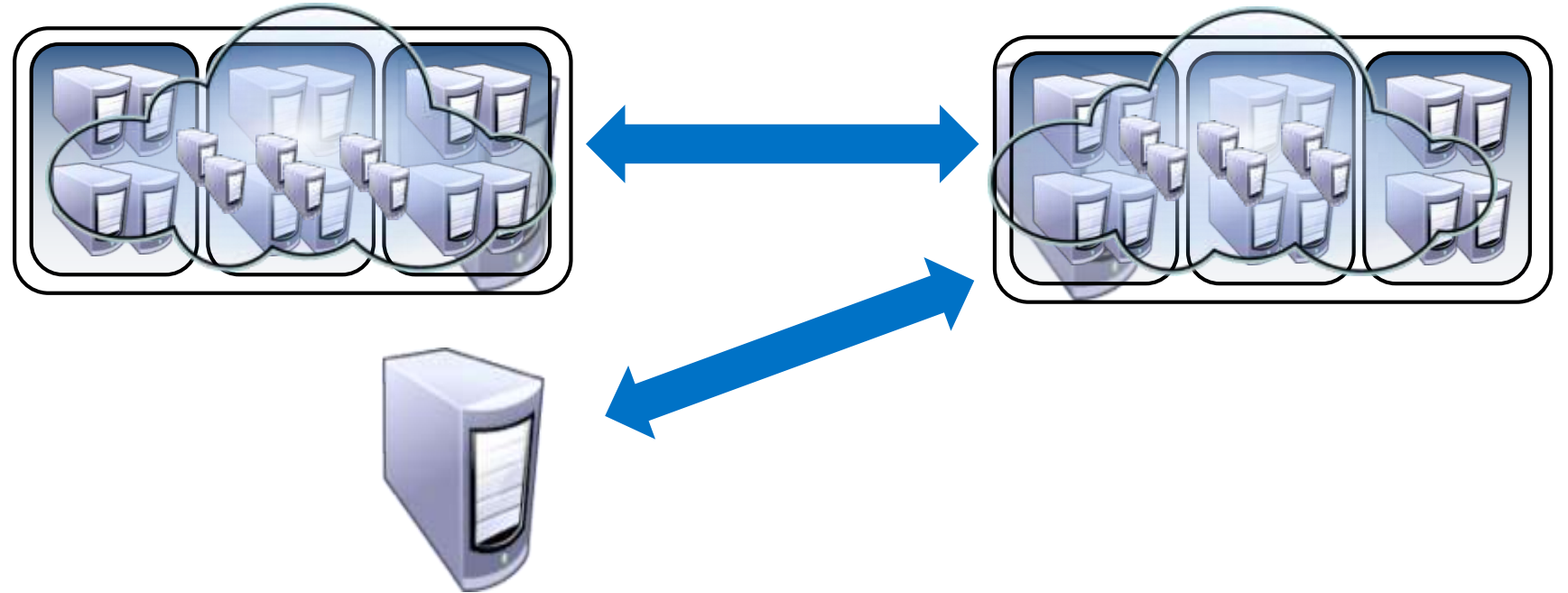
Physical to  
Physical

Physical to  
Virtual

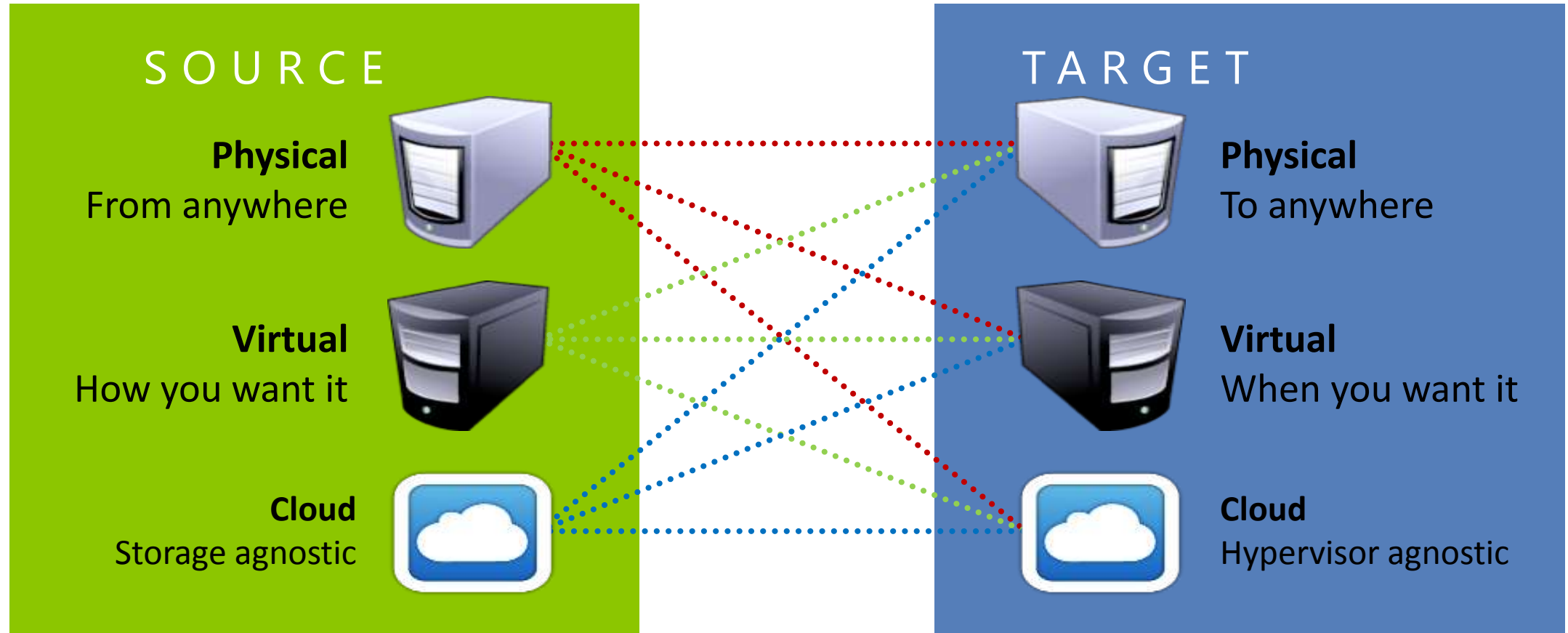
Virtual to  
Virtual

Premise to  
Cloud

Cloud to  
Cloud



# Workload Mobility – Using Replication



# Workload Mobility – What's Important

## Flexible

Supports a broad range of platforms  
Data, Application, Server, Hypervisor, Site

## Non-intrusive

Minimizes user down-time  
Minimizes impact on applications

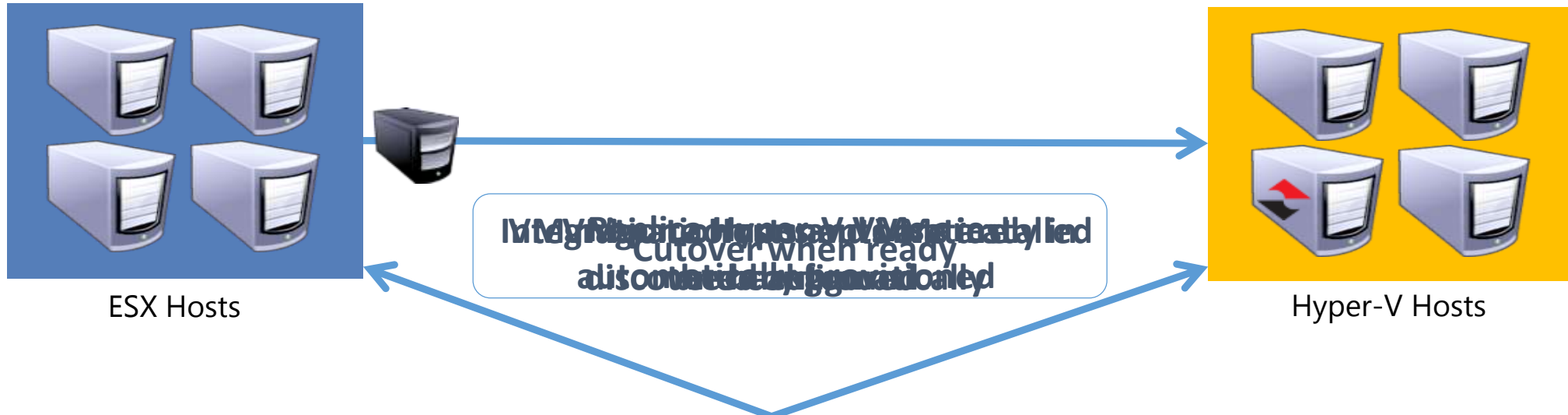
## Efficient

Optimizes data transfer  
Leverages existing investments

## Manageable

System Center 2012 Integration  
Automated migration & redirection of users

# System Center Integration



# Demo Move

# Summary

- Customers are migrating for a number of reasons:
  - Cost
  - Comprehensive Management,
  - Automation
  - Integration
- Multiple options available for Migration InTheBox
  - Virtual Machine Manager (V2V/P2V) or with Orchestrator
- MAT with NetApp Shift
  - Free solution to migrate multiple VMs from VMware to Hyper-V with no System Center
- DoubleTake Move with System Center
  - Accelerates and Scales the free MVMC through simple, extensible automation